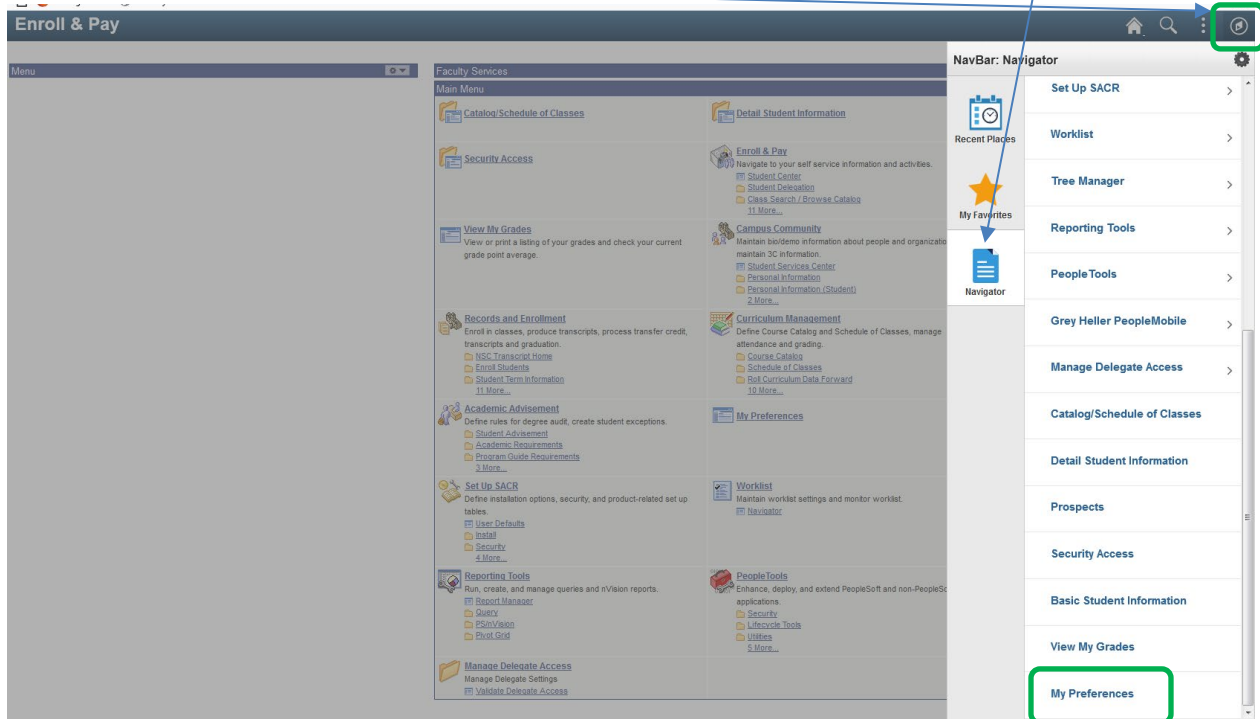


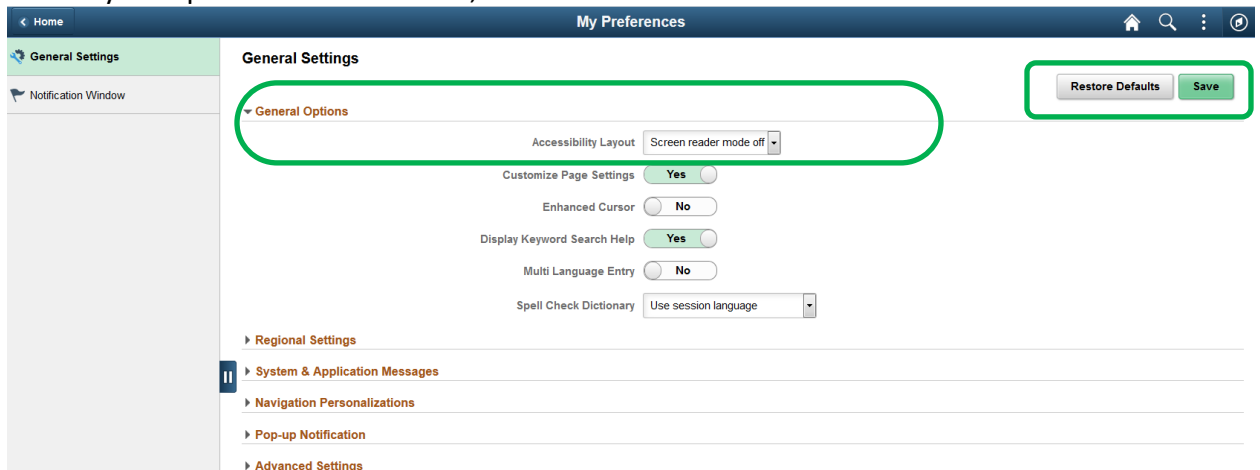
Users can customize their settings in Enroll and Pay to accommodate the usage of screen readers. Screen readers identify and interpret what is being displayed on the screen in a text-to-speech output device.

1. To change your My Preferences, start at the **My Preferences** from the Navigator in the NavBar.



2. Choose one of two options in the Accessibility Layout in the General Options area.

3. Once you have decided which option you would like, click the **Save** button. To restore your options back to default, click **Restore Defaults** button.



4. You will have to log out of your account and login again in order to refresh your account.